

— MICROLEARNING

# Nerdio Compass

*your map from legacy VDI to  
Windows Cloud*

---

By **Bas van Kaam**

PRINCIPAL LEARNER ARCHITECT

# You can't *modernize* what you can't **see**.

## 01 **Renewal cycles are forcing the conversation now**

Across the legacy VDI landscape, many IT teams have a 6 to 12 month window to decide: renew, replace, or modernize. The decision is loud and the timeline is short.

---

## 02 **Windows 365 and AVD cover almost every VDI workload**

The harder question is which workload fits which destination, and at what cost. Light office work, knowledge work, and power-user workloads each map differently.

---

## 03 **Most plans still start from outdated documentation**

The spreadsheet, the architecture diagram from two years ago, the best-guess estimate. Compass replaces these with measured data straight from the live environment.

# A discovery layer for the VDI you have. The Windows Cloud you're heading to.

*Nerdio Compass connects to your existing VDI environment, analyzes how it is actually configured and used today, and gives you the foundation to plan a confident move toward Windows 365, Azure Virtual Desktop, or AVD Hybrid.*

---

## COMPASS AT A GLANCE

- **Status** Private preview, announced May 5, 2026 at NerdioCon. Citrix support comes first.
- **Foundation** Connects directly to your existing Citrix environment. No disruption to live production workloads.
- **Coverage today** Citrix Virtual Apps and Desktops, plus Citrix DaaS. Both are read by the same connector.
- **Roadmap** Microsoft Intune, Azure Virtual Desktop, Omnissa Horizon (Cloud and Next Gen), and Amazon WorkSpaces.
- **Audience** IT and EUC teams running existing VDI who are planning a move to Windows Cloud.

# What Compass actually measures, in four dimensions.

## ● ENVIRONMENT & INFRASTRUCTURE

### Source-to-leaf inventory

Every source, delivery group, machine catalog, and published app captured in one inventory you can browse and filter.

### Snapshot timestamps

Each scan stored as a dated snapshot you can re-run, compare against earlier baselines, and delete when no longer needed.

### Read-only and fast

Connects to your existing Citrix deployment without touching production. Processing measured in milliseconds, not days.

## ● USERS & WORKLOADS

### Session host modes

Multi-random, single-random, single-static discard, and single-static local profiles surfaced from the live environment.

### App-level visibility

Every published app surfaced with executable paths, arguments, status, and the delivery group it belongs to today.

### Measured behavior

Real session usage observed from the environment itself, so the plan starts from data rather than from outdated docs.

## ● POLICIES & READINESS

### Captured policy layer

The Citrix policy layer wrapping your VDI today is surfaced for review, alongside its assignments and current scope of impact.

### Hundred-point readiness

Every delivery group is scored on a 100-point readiness scale against AVD and Windows 365 session host modes side by side.

### Three-tier triage

Three tiers split the results: high at 80 and above, medium at 60 and above, low below 60, so the eye lands on priorities first.

## ● DESTINATIONS & OUTPUTS

### Five Windows Cloud paths

AVD Desktops, AVD RemoteApps, Windows 365, Windows 365 Enterprise mapping, and Windows 365 Cloud Apps each scored separately.

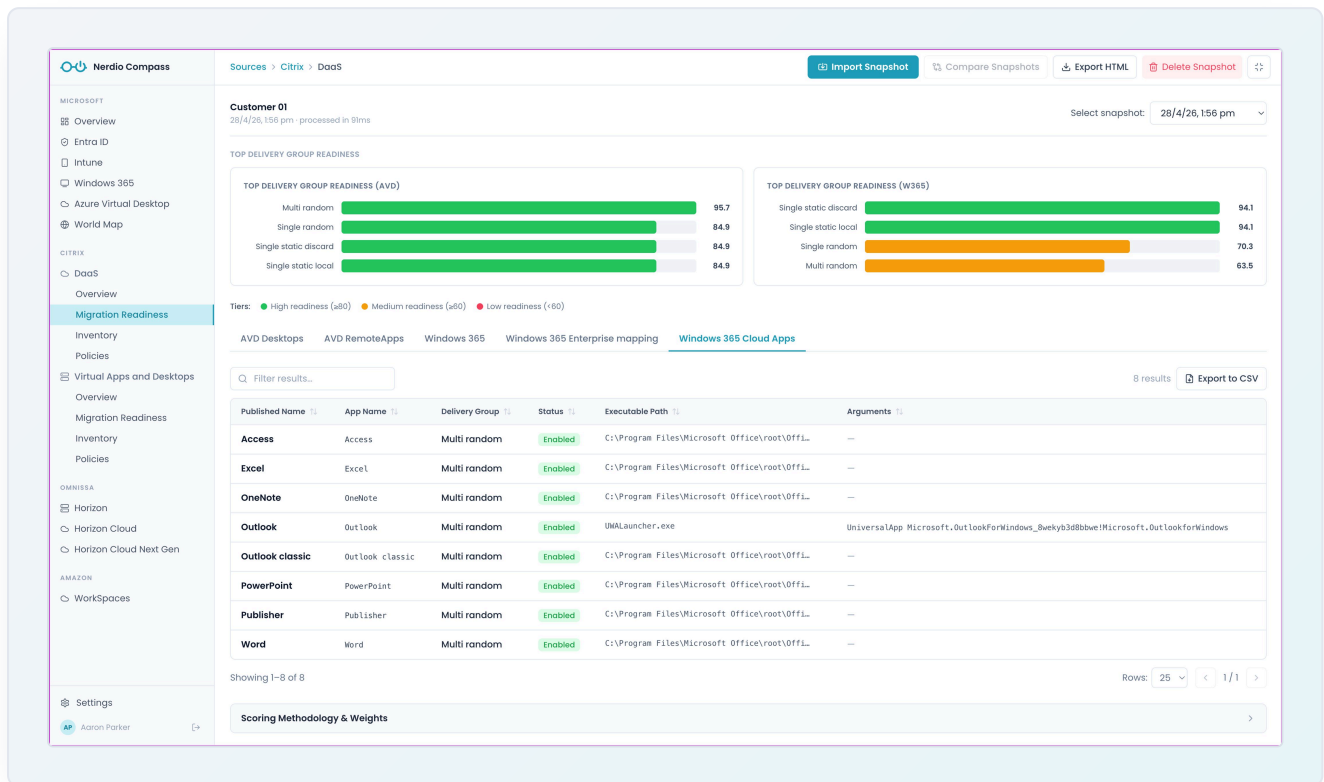
### Snapshot comparison

Re-run discovery later and compare snapshots side by side, so progress over time becomes visible across the estate.

### Exports built in

Full HTML export of any snapshot for sharing. CSV export per result table for spreadsheet analysis or board-ready reports.

# What Compass actually shows you



The Migration Readiness AVD Remote view inside Nerdio Compass, scoring a Citrix DaaS source against five Windows Cloud destinations. This single view replaces what is normally a multi-week internal discovery sprint built on outdated documentation. Three things to notice on this screen:

### TOP OF THE VIEW

Each delivery group scored zero to 100 against AVD and Windows 365 host types side by side, in one pane.

### TIER LEGEND

Green at 80 and above, amber at 60 and above, red below 60. Triage across the estate happens at a glance.

### BOTTOM TABLE

Every published app surfaced under the selected destination tab, with executable paths and arguments.



STEP 5 · THE INSIGHT TO REMEMBER

*Compass is not another dashboard.*

*It is the **measured ground truth** every  
Windows Cloud migration plan should start  
from.*



# The 1,400-user renewal scenario

## ● TODAY

A 1,400-user European insurance carrier runs Citrix Virtual Apps and Desktops on-premises across three sites for back-office and underwriting teams. The Citrix renewal is due in eight months. Two solution architects estimate the cost of moving to Windows Cloud, and their numbers differ by 40%. The CIO needs one defensible estimate before the next board meeting.

**1,400**

USERS

**3**

SITES

**8 mo**

UNTIL RENEWAL

**40%**

ESTIMATE SPREAD

## ● WITH COMPASS

The team enrolls in the private preview, points Compass at their Citrix environment, and gets back a measured baseline of components, workloads, and licensing. Each delivery group lands on the readiness scale against five Windows Cloud destinations. The board conversation moves from gut feel to numbers backed by real session data.



### Read-only

Connects to live Citrix without disrupting production workloads



### Tier scoring

High, medium, and low readiness mapped per delivery group



### Five destinations

AVD and Windows 365 paths scored side by side per workload

**5 paths**

scored side by side, so the spread closes from  $\pm 40\%$  to one defensible number for the board

# Three questions for your environment

Q · 01

**Which of your VDI environments has the worst gap between the documentation and what is actually running today?**

**Hint:** *That is the environment where Compass would surface the most you did not already know.*

Q · 02

**If you had measured workload data ready today, which migration decision would you stop arguing about?**

**Hint:** *Renew vs modernize. Lift-and-shift vs re-platform. One destination vs a mix.*

Q · 03

**Are you running Citrix today and considering a Windows Cloud move?**

**Hint:** *The Compass private preview is open. The signup link is on Nerdio's announcement post from May 5, 2026.*

## TAKE-AWAY

Discovery before destination. Measurement before migration.

**The map before the journey.**

*Found this useful? Share it with one colleague who is currently planning a VDI modernization.*

BAS VAN KAAM · PRINCIPAL LEARNER ARCHITECT AT NERDIO